

Seco 445-460w

High efficiency monofacial modules

PERC 182mm

• PERC MODULE ADVANTAGE

- Less mismatch to get more power
- Less power loss by minimizing the shading impact
- Excellent low-light performance
- Low BOS and LCOE
- 3 times EL test to ensure best quality
- Superior load capacity 2400 Pa wind load & 5400 Pa snow load

• QUALITY SYSTEM

ISO9001 / ISO14001 / ISO45001

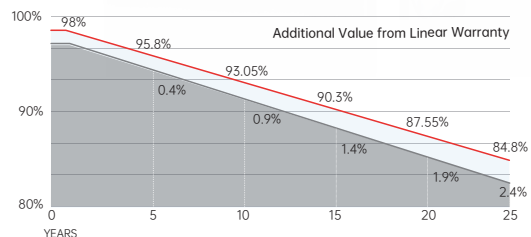
• PRODUCT CERTIFICATION



• INSURANCE

PICC

• WARRANTY



Guarantee on product material and workmanship



Linear power output warranty



SERAPHIM ENERGY GROUP CO., LTD.

Add: NO.18, Shichuan Road, Jinzhai Economic Development Zone, Lu'an City, Anhui Province
Tel: +86-564-7736177 Email: info@seraphim-energy.com

Electrical Characteristics

Module Type	SRP-445-BMB-HV		SRP-450-BMB-HV		SRP-455-BMB-HV		SRP-460-BMB-HV	
	STC	NOCT	STC	NOCT	STC	NOCT	STC	NOCT
Maximum Power at STC (Pmp)	445	333	450	337	455	341	460	345
Open Circuit Voltage (Voc)	41.22	38.41	41.32	38.57	41.42	38.67	41.52	38.74
Short Circuit Current (Isc)	13.66	11.04	13.76	11.12	13.86	11.20	13.96	11.28
Maximum Power Voltage (Vmp)	34.18	31.82	34.28	31.98	34.38	32.06	34.49	32.25
Maximum Power Current (Imp)	13.03	10.48	13.13	10.56	13.24	10.64	13.34	10.71
Module Efficiency at STC(ηm)	20.56		20.79		21.02		21.25	
Power Tolerance(W)	(0, +4.99)							
Maximum System Voltage	1500V DC							
Maximum Series Fuse Rating	25 A							

STC: Irradiance 1000 W/m² module temperature 25°C AM=1.5
Power measurement tolerance: +/-3%

Temperature Characteristics

Pmax Temperature Coefficient	-0.34 %/°C
Voc Temperature Coefficient	-0.26 %/°C
Isc Temperature Coefficient	+0.05 %/°C
Operating Temperature	-40 ~ +85 °C
Nominal Operating Cell Temperature(NOCT)	45±2 °C

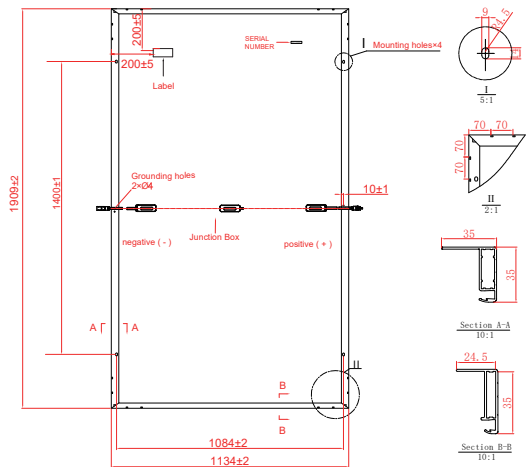
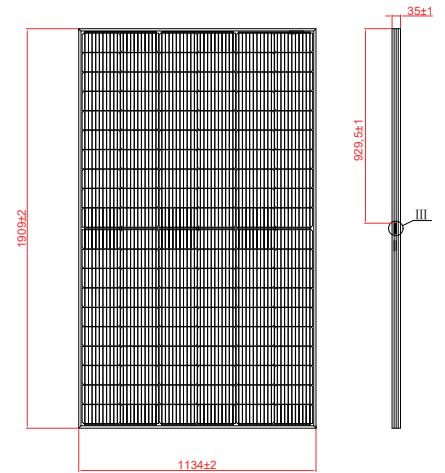
Mechanical Specifications

External Dimensions	1909 x 1134 x 35 mm
Weight	22.3 kg
Solar Cells	PERC Mono (120 pcs)
Front Glass	3.2mm AR coating tempered glass, low iron
Frame	Anodized aluminium alloy
Junction Box	IP68, 3 diodes
Output Cables	4.0mm ² , 250mm(+)/350mm(-) or Customized Length
Mechanical Load	Front side 5400Pa/ Rear side 2400Pa

Packing Configuration

	1909 x 1134 x 35 mm	
Container	20'GP	40'HQ
Pieces per Pallet	35	31
Pallets per Container	5	24
Pieces per Container	175	744

For details, please consult SERAPHIM.



I-V Curve

